

RAPID JETWASH

Innovation Productivity Pioneering Quality



4 MINUTE RAPID WASHOUT CYCLE
MIXERS WASHED BY ONE UNIT

OTHER FEATURES:

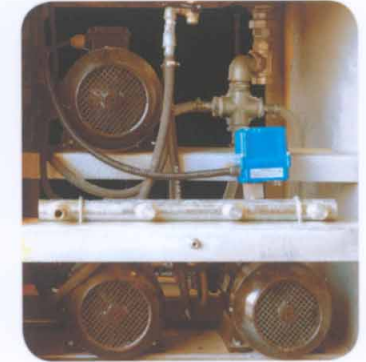
- Integral Water Tank - 380 litres (118 US Gallons) capacity
- 3 or 4 high powered Jetwash heads use 90 litres (24 US Gallons) per min.
- Jetwash heads continuously cleaned using batching water
- All systems come with high pressure lance as standard
- Greatly reduced wear on mixer components
- System operates at 2000 PSI
- Full galvanised body

RAPID JETWASH SAVINGS:

- **TIME** - 4 minute washout cycle
- **MONEY** - increased mixer production
- **SPACE** - compact and self-contained machine
- **SAFETY RISKS** - no need for employees inside mixer
- **POWER** - timed sequence of motor starting
- **WATER** - low water consumption



Before and After Jetwash System Cleaning



MODELS:

- RJW3 - 3 pump system
 - RJW4 - 4 pump system
- for internal cleaning of the mixer and external cleaning with a lance.

Height	1890mm	74"
Width	1250mm	49"
Depth	1000mm	39"
Weight	770kgs	1697lbs

Your Local Dealer:

Rapid International USA, Inc.
7081 Brighton Blvd.
Commerce City, CO 80022 USA
(303) 853 - 0068 Phone
(303) 286 - 1416 Fax
www.rapidintl.com Website

96 Mullavilly Road - Tandragee
Craigavon - Co. Armagh
N. Ireland - BT62 2LX

t +44 (28) 3884 0671
f +44 (28) 3884 0880

info@rapidinternational.com
www.rapidinternational.com

