



Reclaimer profiles are produced using a computer controlled plasma cutter.



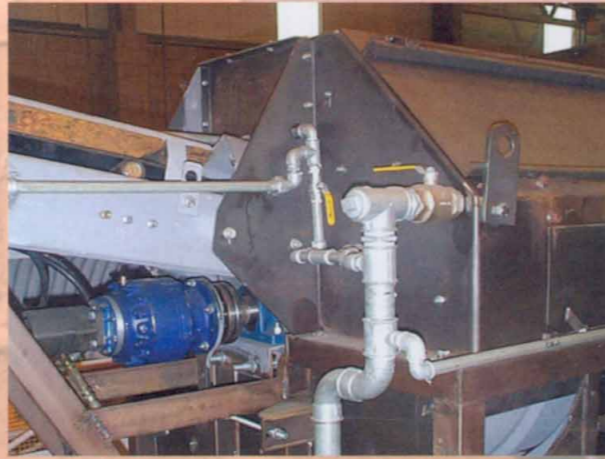
MK 1 reclaimer ready for painting

# RAPID

INTERNATIONAL LTD.



All reclaimers are manufactured to the highest quality standards



All reclaimer pipework is galvanised.

For the Separation of Concrete into its Constituent Parts



### Your Local Rapid Dealer

**Rapid International USA, Inc.**  
 7081 Brighton Blvd.  
 Commerce City, CO 80022 USA  
 (303) 853 - 0068 Phone  
 (303) 286 - 1416 Fax  
[www.rapidintl.com](http://www.rapidintl.com) Website

**Head Office and Works**  
 96 Mullavilly Road, Tandragee,  
 Craigavon, N. Ireland BT62 2LX  
 Tel: (01762) 840671  
 Fax: (01762) 840880

**International**  
 Tel: 44 1762 840671  
 Fax: 44 1762 840880

E-Mail: [sales@rapidinternational.com](mailto:sales@rapidinternational.com)  
 Web Site: [www.rapidinternational.com](http://www.rapidinternational.com)

The Manufacturer reserves the right to alter the specification without prior notice.

## Reclaimers



All reclaimers are checked for quality before they leave the factory.



The concrete is discharged from the truck mixer into the feed tray.



The sand is removed from the mix by sand screws.



The aggregate is removed using a conveyor.



A MK2 Reclaimer set up between sand and aggregate pits and a settling tank.

### Main Frame

One part rugged all welded steel fabrication of rectangular box section and mild steel plate. Complete with tray feeder plate and safety guards.

### Drum Screen

Steel wire mesh supported by a steel frame. The drum is 1.3m (51") in diameter and 2.7m (106") long and is powered by an hydraulic motor and gearbox drive.

### Dewatering

A screw conveyor 400mm (16") and powered by direct coupled hydraulic motor gearbox unit.

### Washout System

Water jets in fixed positions.

### Aggregate Conveyor

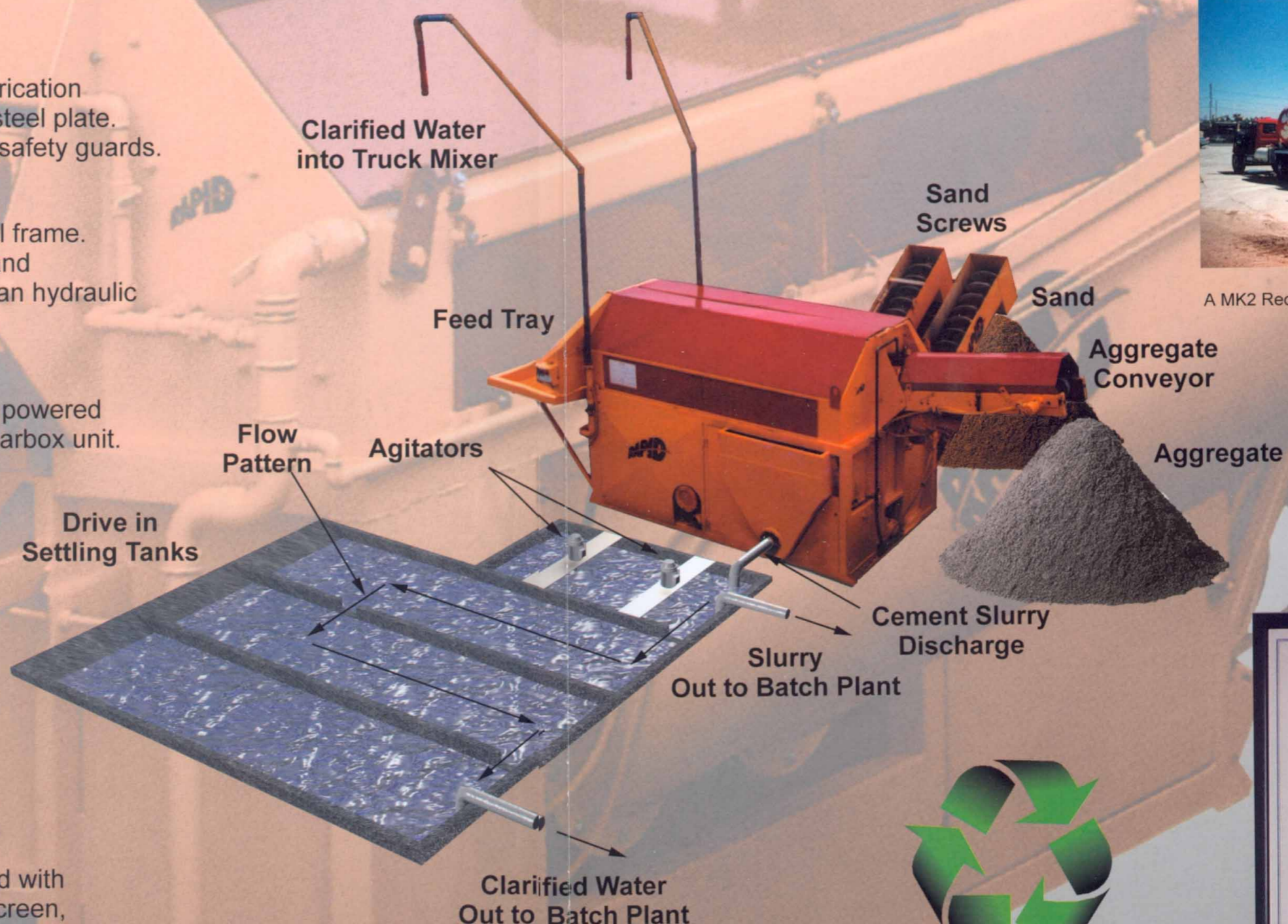
Channel section with head drum powered by hydraulic geared motor.

### Sand Screws

400mm (16") screws powered by hydraulic geared motors.

### Hydraulic Power Pack

Electric Motor 7.5 kw (10 hp) coupled with hydraulic pumps to drive the drum screen, sand screws and conveyors, controlled with a safety relief valve.



A MK2 Reclaimer at work in the U.S.



The Friend of the Environment

